



# KOSPIE

## Combined Study and Practice Stays for Engineers from Developing Countries

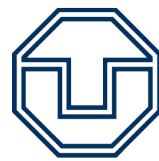
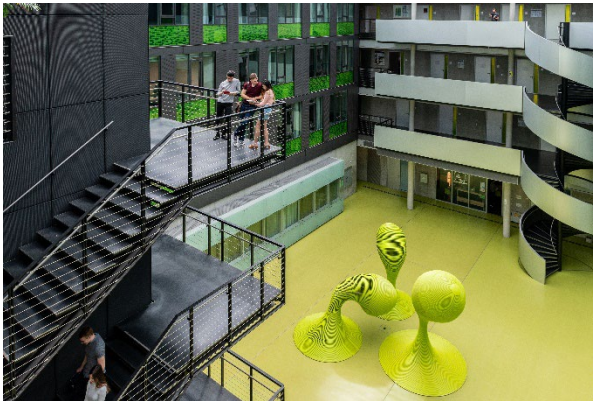
### Information on German Institution

*This fact sheet will be published for potential scholarship candidates to inform themselves about participating German universities and institutions. Please fill in the form with potential candidates in mind who might have very little background knowledge about living and studying in Germany. Information provided should be specific for the programme.*

---

## 1. General information

### 1.1 Logo and image of university



**TECHNISCHE  
UNIVERSITÄT  
DRESDEN**

Visit our website: <https://tu-dresden.de/why-tud>

1.1 Institution has been accredited by  
<https://www.hochschulkompas.de/en/higher-education-institutions.html>

1.2 Does your institution follow the code of conduct for exchange programmes?  
Yes ☒ No ☐

1.3 Location of the institution. *Please specify if the institution has more than one location.  
(up to 100 words)*

Dresden, capital of the Free State of Saxony, Germany



## 2. Faculties and Bachelor programmes participating in the programme

Name of faculty	Name of the Bachelor programme at the faculty; webpage-link to Bachelor programme
<a href="#">Faculty of Electrical and Computer Engineering</a>	<a href="#">Biomedical Engineering</a> <a href="#">Electrical Engineering</a> <a href="#">Information Systems Engineering</a> <a href="#">Mechatronics</a> <a href="#">Renewable Energy Systems</a>
<a href="#">Faculty of Computer Science</a>	<a href="#">Computer Science</a> <a href="#">Media Computer Science</a>
<a href="#">Faculty of Mechanical Science and Engineering</a>	<a href="#">Material Science</a> <a href="#">Mechanical Engineering</a> <a href="#">Process Engineering and Natural Materials Technology</a>
<a href="#">Faculty of Architecture</a>	<a href="#">Architecture</a> <a href="#">Landscape Architecture</a>
<a href="#">Faculty of Business and Economics</a>	<a href="#">Business Administration and Economics</a> <a href="#">Business Education and Management Training</a> <a href="#">Business Information Systems</a> <a href="#">Industrial Engineering and Management</a>
<a href="#">Faculty of Civil Engineering</a>	<a href="#">Civil Engineering</a>
<a href="#">Faculty of Environmental Sciences</a>	<a href="#">Forest Sciences</a> <a href="#">Geodesy and Geoinformation</a> <a href="#">Geography</a> <a href="#">Hydroscience: water management, hydrology and material flow management</a>
<a href="#">Faculty of Transport and Traffic Sciences</a>	<a href="#">Transport Economics</a> <a href="#">Transport Engineering</a>
<a href="#">Faculty of Biology</a>	<a href="#">Molecular Biology and Biotechnology</a>
<a href="#">Faculty of Chemistry and Food Chemistry</a>	<a href="#">Chemistry</a> <a href="#">Food Chemistry</a>
<a href="#">Faculty of Mathematics</a>	<a href="#">Mathematics</a> <a href="#">Mathematics in Business and Economics</a>
<a href="#">Faculty of Physics</a>	<a href="#">Physics</a>
<a href="#">Faculty of Psychology</a>	<a href="#">Psychology</a>




Insert new table rows for additional faculties/study programs

### 3. Services for international/KOSPIE students and special attractions of the area

3.1 What kind of services do you offer to international students and especially for KOSPIE students?

(up to 150 words)

Services for KOSPIE students:

- Welcome meeting for KOSPIE students
- Spanish-speaking KOSPIE tutors to assist with administrative processes, help with the organisation of studies (e.g. setting up a timetable, registration for exams), and support students in personal matters (e.g. arrival and departure, accommodation, visits to the doctor)
- Internship application training and coaching, support in finding an internship
- German language course during studies
- Cultural programme for KOSPIE students with excursions in the region

Further information on selection of courses and the study project, as well as testimonials is available at the TU Dresden KOSPIE program website:

<https://tu-dresden.de/studium/vor-dem-studium/internationales/stipendien/daad-kospie>

Services for international students in general:

- Accommodation in student dorms (single rooms in flat shares) near campus and reasonably priced (<https://www.studentenwerk-dresden.de/english/wohnen/wohnheimkatalog/>)
- Student canteens and cafeterias
- Tutor programme with individual help for all international students
- Buddy and mentoring programmes (general and on faculty-level), student-led activities, and welcome events organised by participating faculties and schools
- Language courses for TUD students (free of charge) that can be used to continue learning German or to learn other languages, see <https://tu-dresden.de/gsw/slk/lsk/sprachen-fuer-alle-studiengaenge>
- Dresden University Sports Centre (DHSZ), see <https://tu-dresden.de/dhsz>



### 3.2 What are the most special attractions for international students in the region? (up to 250 words)

Affectionately known as 'Florence on the Elbe', Dresden counts among Germany's most livable cities.

It is home to famous art collections and museums, a magnificent historic centre as well as theatres, concert halls, and the world-renowned Semper Opera.

Trendy pubs and student clubs in the city's Neustadt district attract young people from all over the world.

The beautiful Elbe valley, the Elbe Sandstone Mountains, and the Erzgebirge/Ore Mountains provide limitless outdoor adventure opportunities.

Other cities such as Berlin, Leipzig, Prague (Czech Republic) and Wrocław (Poland) are easy to reach by car or train.

For more see: <https://tu-dresden.de/why-tud>



## 4. Cost of living

### 4.1 Dorms, costs at university cafeteria etc.

Item	Cost or comment
Average student dorm rent per month	290 EUR (furnished)
Average rent in private housing	Shared apartment: 300-400 €/month (mostly unfurnished)
Semester contribution/fee	288,10 EUR (winter semester 2024/25)
Public transportation	Included in the semester contribution, with use of mobi bikes (bicycles)



Average expenses	600-800 EUR/month (including housing, public transportation, other living expenses)
Meal at the canteen/cafeteria	2,30 EUR - 4,50 EUR
	...

4.2 Further remarks, if necessary (for example information on extra fee for dorms or semester fee etc.)

A deposit must be paid before signing the tenancy agreement in the student residence (200 - 400 EUR). This amount will be repaid at the end of the tenancy.

## 5. Language skills required

Language	Certificate/level or score	Comment
English	LEVEL B 1 TOEFL (iBT): min. 43	...
German	LEVEL B1 TestDaF -	Exception: B2 Certificate for Chemistry and Biology TestDaF certificate is not required ...

## 6. Established partnerships with the following Latin-American higher education institutions and faculties

<b>Argentina</b>	Universidad Nacional de Mar del Plata Universidad Nacional de San Martín Universidad Nacional de San Martín Universidad Nacional del Centro de la Provincia de Buenos Aires Universidad Tecnológica Nacional
<b>Colombia</b>	Universidad Nacional de Colombia Universidad del Rosario
<b>Mexico</b>	Instituto Tecnológico de Estudios Superiores de Monterrey Universidad Panamericana Universidad Nacional Autónoma de México Universidad del Valle de Atemajac



### Comments

Students from all universities participating in the DAAD KOSPIE programme are invited to apply (not only from partner universities of TU Dresden)

## 7. Tuition waivers

Yes ☐ No ☒

Comment:

TU Dresden is a public university and does not charge any tuition fees. The semester fee of 288,10 EUR/semester has to be paid by all students and includes a ticket for public transport.

## 8. Cooperation with companies regarding possibilities for internships

As part of the TU Dresden DRESDEN-concept research alliance, TU Dresden cooperates with 40 local non-university partner institutions. The partner institutions include renowned research institutions such as the Max Planck Society, the Leibniz Association, the Helmholtz Association and the Fraunhofer Society.

Further information: <https://dresden-concept.de/>

With many international companies, Dresden is now one of the strongest economic areas in Saxony and one of the largest economic regions in Germany. Above all, companies in the fields of microelectronics, information technology, electrical engineering and biotechnology characterize the economic success.

Other important economic sectors include communications technology, nanotechnology, solar technology and aerospace technology. In terms of the number of employees, the largest companies in Dresden include Globalfoundries, Infineon Technologies, Elbe Flugzeugwerke, T-Systems Multimedia Solutions, GlaxoSmithKline, SAP Deutschland, Veolia Deutschland and Von Ardenne Anlagen-Technik. Furthermore, 40 of the most important medium-sized companies in Germany are based in Dresden.

Dresden is particularly strong in the microelectronics industry and nanotechnology. The Saxon state capital is Europe's largest microelectronics location. Silicon Saxony, Europe's largest industry network for the semiconductor and microsystems industry, is also based here.

## 9. Further remarks/special services

If you like, we can put you in touch with students from Argentina, Colombia and Mexico who are currently studying at TU Dresden before your arrival.

## 10. Housing situation

TU Dresden has been accepting scholarship holders as part of the KOSPIE program for several years. In recent years, all KOSPIE scholarship holders have received a place in a hall of residence.

## 11. Contact information





*Contact person at the international office*

Technische Universität Dresden  
International Office  
Incoming Student Mobility / Scholarship  
Programs

Cornelia Hesse  
Phone: +49 (0)351 463 36330  
E-mail: [cornelia.hesse@tu-dresden.de](mailto:cornelia.hesse@tu-dresden.de)

*Other contact person*

Technische Universität Dresden  
International Office  
Incoming Student Mobility / Exchange Students

Ina Deutsch-Gorski  
Phone: +49 (0)351 463 42366  
E-mail: [incoming-mobility@tu-dresden.de](mailto:incoming-mobility@tu-dresden.de)